

Societal expectations emphasize men’s involvement in childhood development, but actual involvement is very limited. A localized community-based study on gender roles in Niger.

Author: Josephine Klein

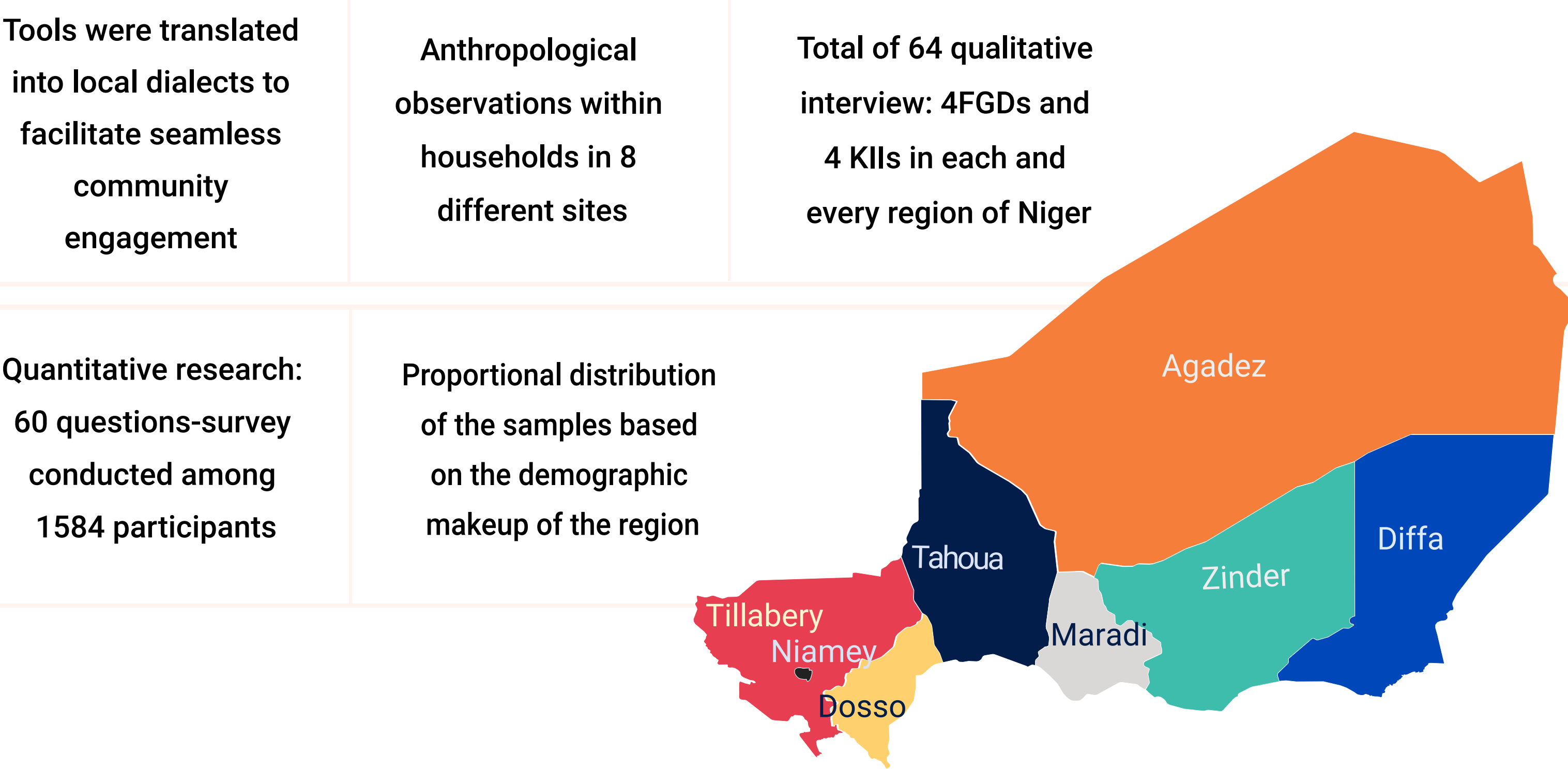
# Unveiling the Impact of Masculinity on Early Childhood and Adolescent Development in Niger

## INTRO AND OBJECTIVE

Gender inequality is an ongoing challenge in Niger and has a significant impact on parenting practices.

- The study aimed to delve into the intricate dynamics of childhood development decision-making in Niger, particularly focusing on the roles of men within diverse communities.
- It sought to uncover the nuances across regions and communities, highlighting local influencers and unique characteristics.
- The goal was to equip UNICEF and the Government of Niger with practical insights to enhance school enrolment, mitigate early marriage rates, and improve access to vital health services.

## METHODS



## CONCLUSIONS

- MAGENTA employed a localized approach, customizing data collection tools to local contexts and utilizing a participatory model. The study facilitated exploration of diverse perspectives across different regions of Niger, yielding community-based insights.
- Findings inspired actionable program recommendations that were aligned with, respectful of, and drawn from Nigerien cultural and normative dynamics.



Focus Group Discussion with men from Tillabery .region

