

Building Healthier Ecosystems:

The Role of One Health and SBC in Pesticide Risk Management

Author: Roggers Kinoti

Co-author: Phillip Kinyota

Affiliation: Centre For Behaviour Change and Communication

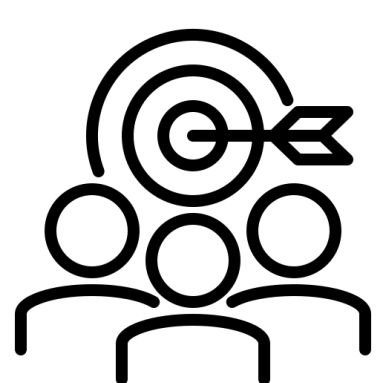
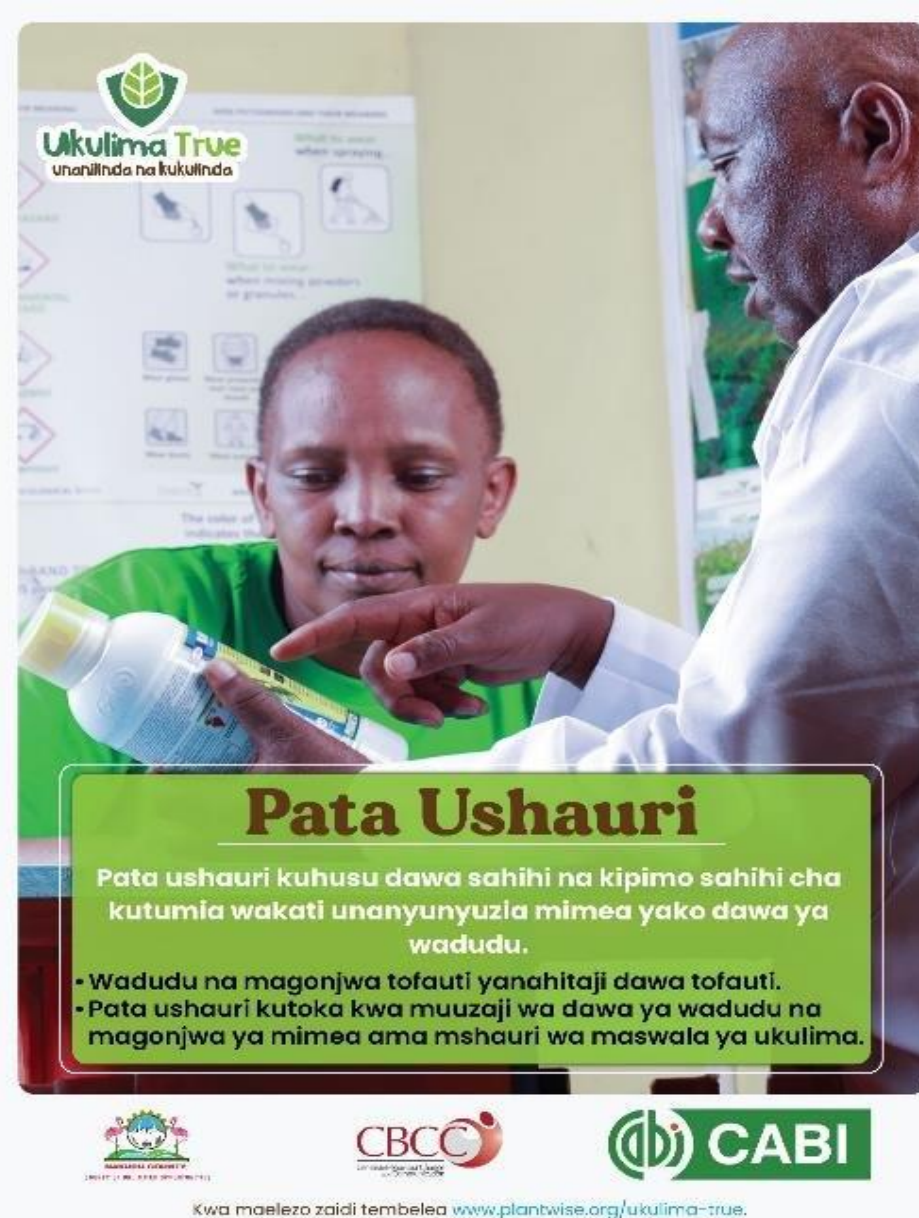
Theme: Integrated behavioral science and local knowledge

INTRODUCTION

The pesticides risk reduction project implemented in Nakuru County in partnership with Centre for Agriculture and Bioscience International, emphasized the interconnected health of humans, animals, and environment, integrating SBC models and strategies into the One Health approach for optimal outcomes

METHODS

SBC strategies included developing a pesticide risk reduction strategy, launching the '**Ukulima True**' (True Farming) campaign, and promoting behaviour change through radio campaigns, peer-to-peer learning, and lead farmer role modelling. Agro-dealers and extension workers were trained, community leaders engaged, and policymakers supported for policy dissemination and coordination.



The campaign targeted **1,194** smallholder farmers, **22** agro-dealers, **7,400** community members, **18** extension workers, and policymakers as secondary and tertiary targets.

RESULTS

- Use of at least one Integrated Pest Management (IPM) technology rose from **85.8%** to **97.6%**
- Monitoring fields for pests increased from **45%** to **85.7%**.
- Knowledge on pesticide label use improved from **84.5%** to **94.2%**.
- PPE increased from **22.7%** to **50.4%**. Awareness.
- Use of SSP services grew from **2.7%** to **18.6%**
- Sprayer calibration practices increased from **45.9%** to **72.2%**.
- Observance of the pre-harvest interval rose from **64.2%** to **86.4%**.
- Awareness of pesticide risks increased from **42.9%** to **66.8%**, and access to reliable pesticide information rose from **40.4%** to **71.4%**.

CONCLUSIONS

By integrating SBC approaches within the One Health framework, the relationship between pesticide risk reduction and overall health can be strengthened. This integrated strategy promotes sustainable agricultural practices, enhances health outcomes across species, and protects environmental integrity.